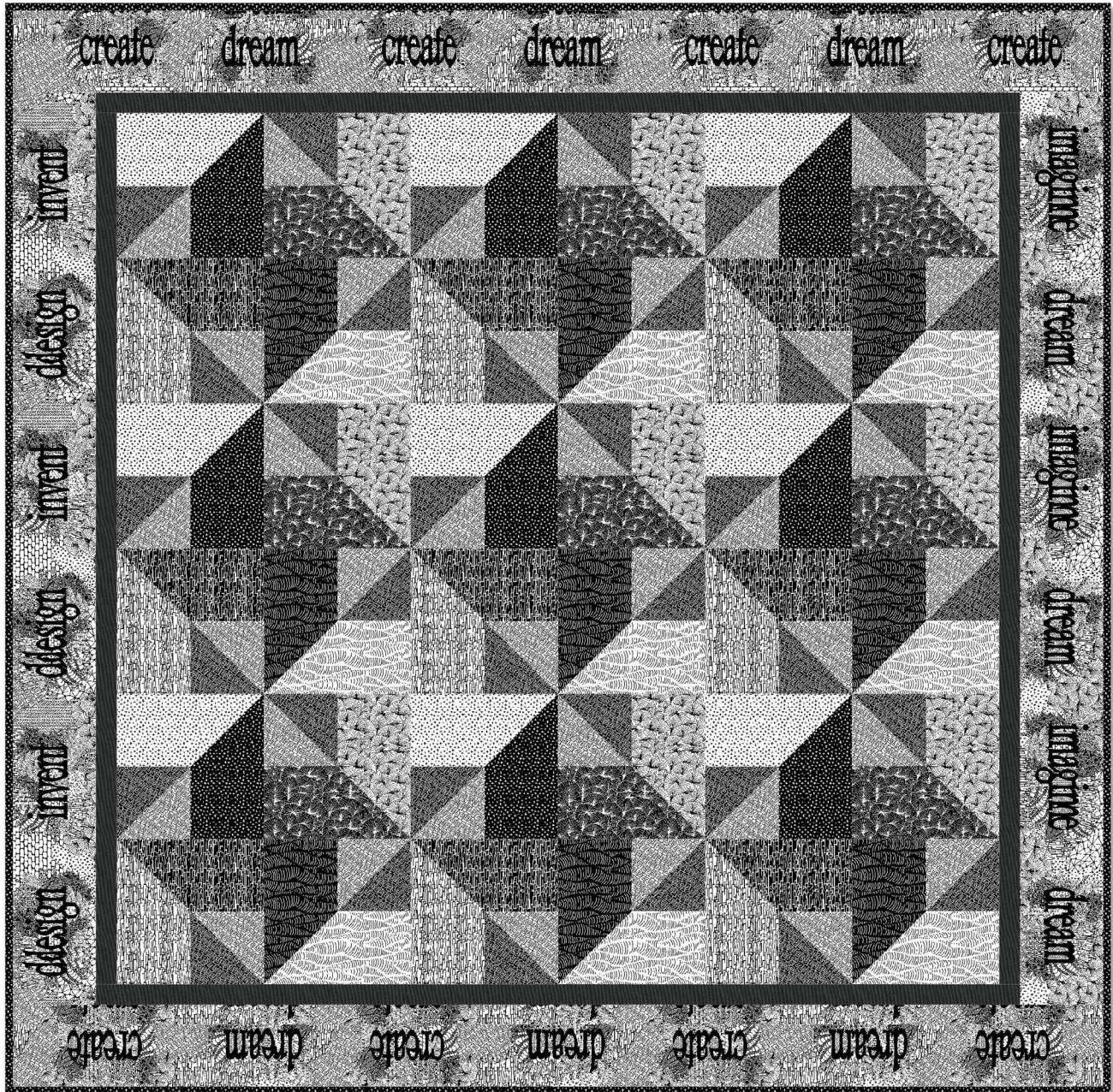


How Dreams Are Spun

Designed by Stacey Day

Featuring the Imagine collection by Another Point of View and Artisan Cotton

Size: 54" x 54"



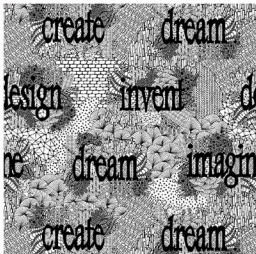
Check www.windhamfabrics.com Free Project section to see if there are any pattern updates before you start your quilt project



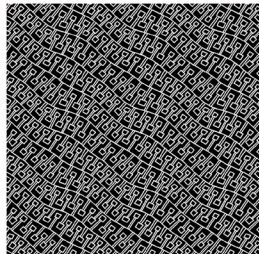
812 Jersey Ave ~ Jersey City, NJ 07310 ~ 201.659.0444 ~ FAX: 201.659.9719
www.windhamfabrics.com email: retail@windhamfabrics.com

How Dreams Are Spun

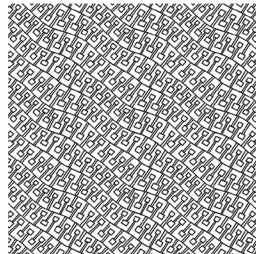
Page 2



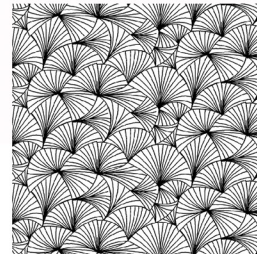
40853-X Multi



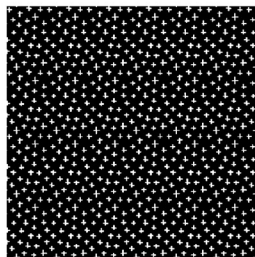
40854-1 Black



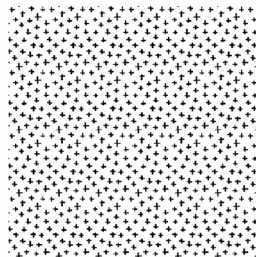
40854-2 White



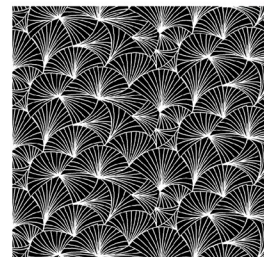
40856-2 White



40855-1 Black



40855-2 White



40856-1 Black

Materials:

Yardage is based on 42" wide fabric

1 1/4 yards 40853-X Multi for Border *additional yardage included for fussy cutting

1/2 yard 40854-1 Black for blocks

1/2 yard 40854-2 White for blocks

3/4 yard 40855-1 Black for blocks and binding

1/4 yard 40855-2 White for blocks

1/4 yard 40856-1 Black for blocks

3 3/4 yards 40856-2 White for blocks and backing

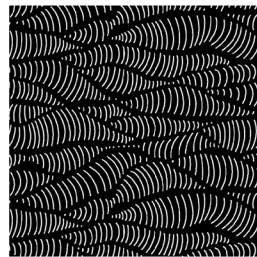
1/4 yard 40857-1 Black for binding

1/4 yard 40857-2 White for blocks

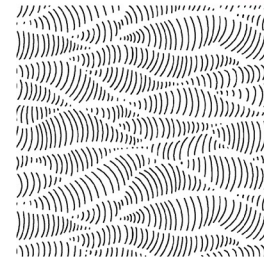
1/4 yard 40858-1 Black for blocks

1/4 yard 40858-2 White for blocks

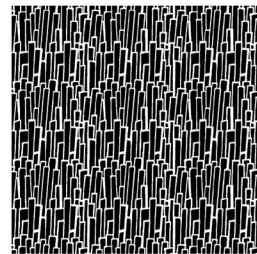
1/4 yard 40171-2 Black Grey for inner border



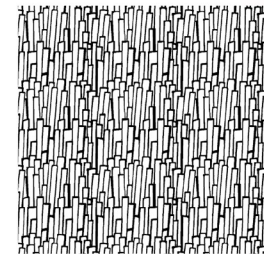
40857-1Black



40857-2 White



40858-1 Black



40858-2 White

Cutting:

From the 40853-x Multi fussy cut:

1 strip, 4 1/2"x 40" of the word pair "Dream Imagine"

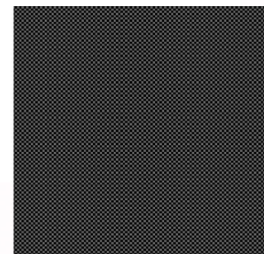
1 strip, 4 1/2"x 40" of the word pair "Invent Design"

2 strips, 4 1/2"x 40" of the word pair "Create Dream"

2 strips, 4 1/2"x 14" of the word pair "Create Dream"

1 rectangle, 4 1/2"x 8" of the word pair "Dream Imagine"

1 rectangle, 4 1/2"x 8" of the word pair "Invent Design"



40171- 2 Black-Grey



WINDHAM FABRICS

How Dreams Are Spun

Page 3

From the 40854-1 Black cut:

18 squares, 4 5/8" cut on the diagonal to make
36 half square triangles (HST)

From the 40854-2 White cut:

18 squares, 4 5/8" cut on the diagonal to make
36 half square triangles (HST)

From the 40855-1 Black cut:

9 rectangles, 4 1/4"x 8"
7 strips, 2 1/4"x 42" for binding

From the 40855-2 White cut:

9 rectangles, 4 1/4"x 8"

From the 40856-1 Black cut:

9 rectangles, 4 1/4"x 8"

From the 40856-2 White cut:

9 rectangles, 4 1/4"x 8"

From the 40857-1 Black cut:

9 rectangles, 4 1/4"x 8"

From the 40857-2 White cut:

9 rectangles, 4 1/4"x 8"

From the 40858-1 Black cut:

9 rectangles, 4 1/4"x 8"

From the 40858-2 White cut:

9 rectangles, 4 1/4"x 8"

From the 40171-2 Black Grey cut:

4 strips, 1 1/2"x 40"

4 rectangles, 1 1/2"x 6"

4 rectangles, 1 1/2"x 8"

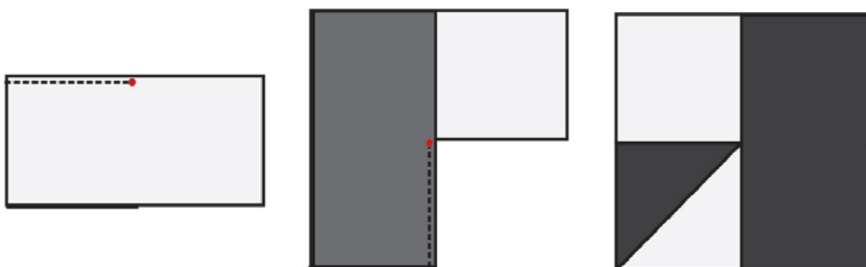
Instructions:

1. Take the 40854-1 Black and 40854-2 White 4 5/8" HST and sew them right sides together (RST) into 36 HST Squares. Trim and square to 4 1/4", then mark the seam allowance in the corner of each HST square as shown.



2. Take 9 HST squares and sew a 40855-1 Black 4 1/4"x 8" rectangle to the White side of the HST square, stopping and backstitching at the marked seam allowance. Press towards the rectangle, and then sew a 40855-2 White 4 1/4"x 8" to the Black side of the HST square, stopping at backstitching at the marked seam allowance.

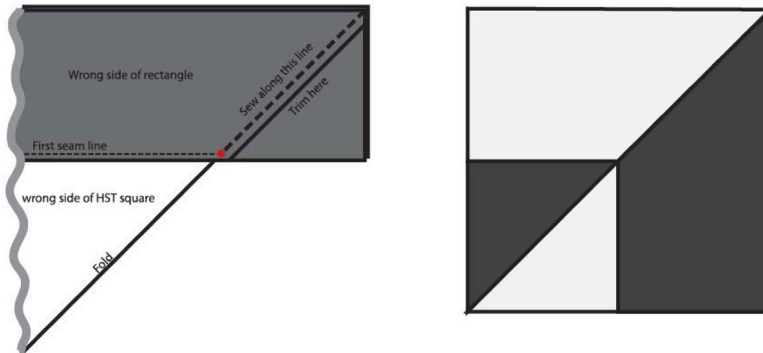
3. Fold the blocks in half on the diagonal, press the seam allowances towards the HST square, and then sew a straight line on the diagonal from the marked seam allowance to the outside corner of the Black and White rectangles as shown, to miter the corner of the block. Trim the seam allowance to 1/4". Press the blocks, trim and square to 8" to make 9 A Units.



WINDHAM FABRICS

How Dreams Are Spun

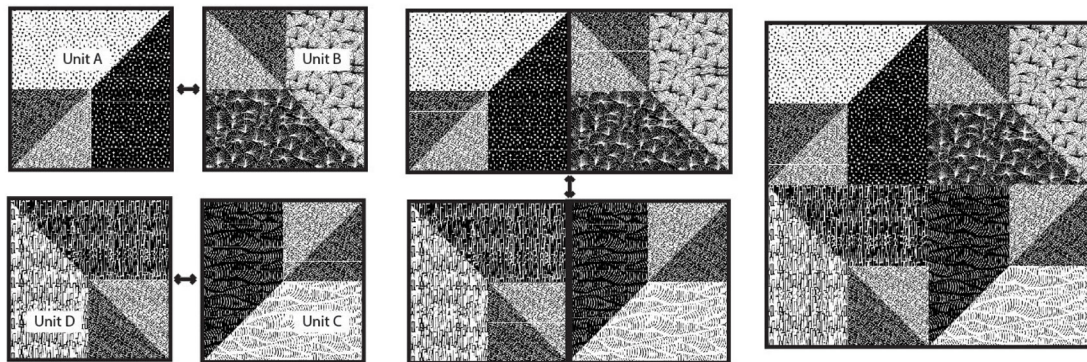
Page 4



4. Repeat the last two steps using the fabrics listed to make 9 each of the remaining blocks:

- B Units - 9 HST, 40856-1 Black and 40856-2 White 4 1/4" x 8" rectangles
- C Units - 9 HST, 40857-1 Black and 40857-2 White 4 1/4" x 8" rectangles
- D Units - 9 HST, 40858-1 Black and 40858-2 White 4 1/4" x 8" rectangles

5. Sew an A Unit, B Unit, C Unit and D Unit together as shown to make a Spin Block. Repeat to make 9 Spin blocks. Trim and square to 15 1/2"



6. Sew the Spin Blocks together into three rows of three blocks. Press the seams in alternating directions, and then sew the rows together into the quilt top. Press well and square the top to 45 1/2".

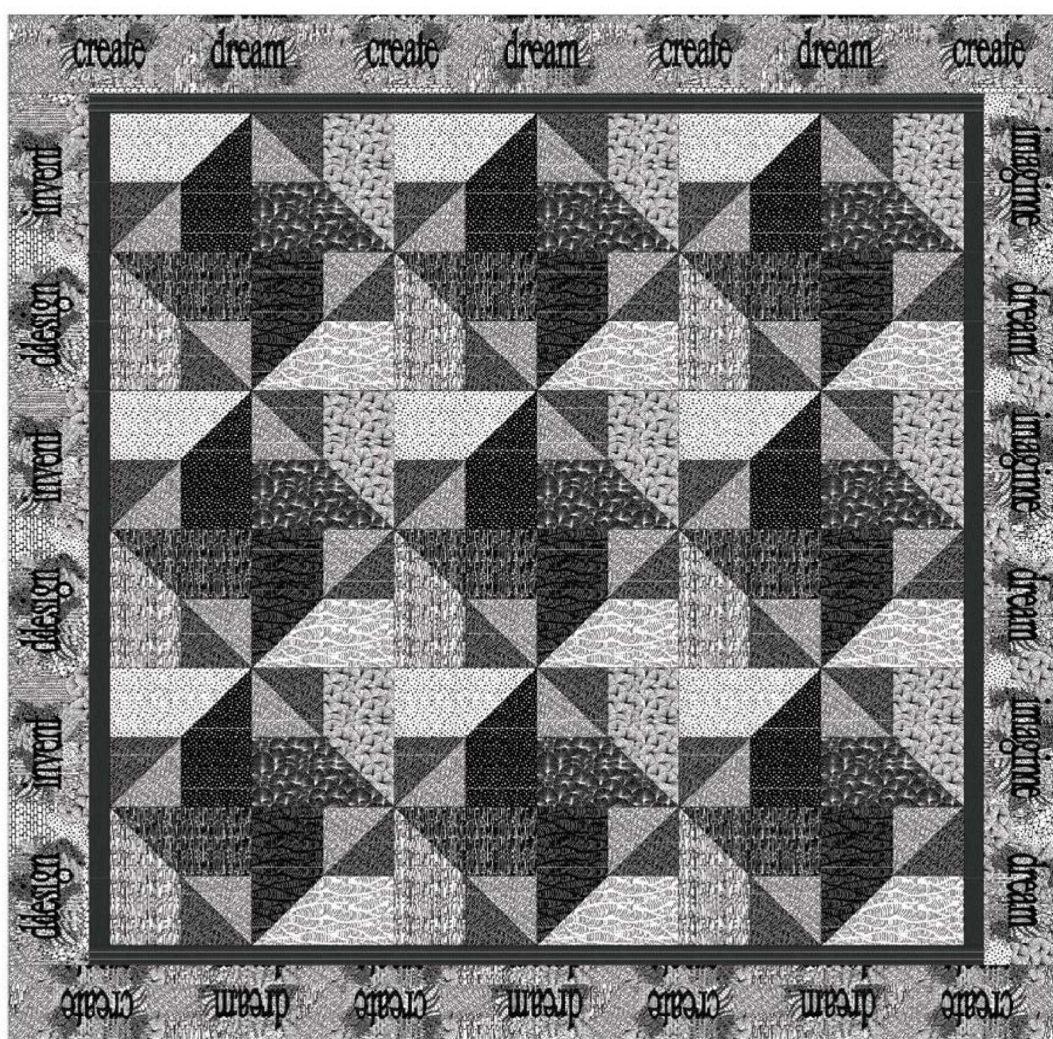
7. Take the 40171-2 Black Grey 1 1/2" x 40" strips and sew either a 1 1/2" x 6" or 1 1/2" x 8" rectangle to the end, to make 2 side borders 1 1/2" x 45 1/2", and two top/bottom borders 1 1/2" x 47 1/2". Sew the borders to the side and then top and bottom of the quilt, matching ends and center. Press towards the border.

How Dreams Are Spun

Page 5

8. Take the "Dream Imagine" 8" rectangle and sew it to the end of the "Dream Imagine" 40" strip to make the left side border 4 1/2"x 47 1/2". Repeat with the "Invent Design" 8" and 40" pieces to make the right side border. Sew the side borders to the quilt top so the words are facing in towards the quilt, and press towards the border. Repeat with the "Create Dream" 14" and 40" pieces to make and apply the top and bottom borders. Press the quilt top.

9. Layer the quilt top with batting and backing; baste. Quilt as desired. Using the 40855-1 Black 2 1/4" wide binding strips, sew around the quilt top. Turn the binding to the back and secure in place by hand or machine. Label and enjoy!



Be sure to visit www.windhamfabrics.com to see the complete collection and to download this and other Free Projects

